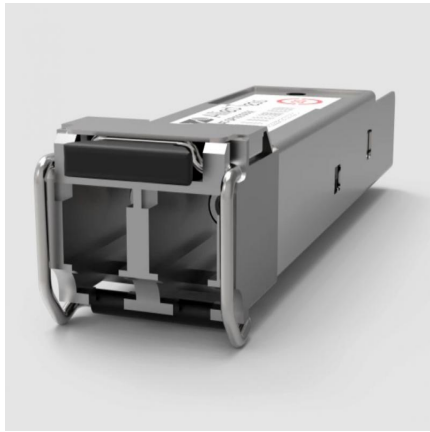


# Allied Telesis AT-SP10SR-I Datasheet



Allied Telesis AT-SP10SR/I 10GBASE-SR, 850 nm, MMF, I-Temp SFP+ Module

AT-SP10SR-I

Allied Telesis AT-SP10SR/I 10GBASE-SR, 850 nm, MMF, I-Temp SFP+ Module

The Allied Telesis SP10 Series offers a wide variety of 10 Gigabit Ethernet connectivity options for data center, enterprise and service provider transport applications. These industry-standard hot-swappable devices simply plug into the Ethernet SFP+ port on all SFP+-compatible devices. Configuration can be optimized to meet a wide variety of distance and service requirements.

## Specifications

- Part Number: AT-SP10SR/I
- Fiber Tyep: MMF
- Connector: LC
- Maximum Distance: OM1-33m, OM2-82m, OM3-300m, OM4-470m
- Wavelength: 850nm
- DDM: Yes
- Transmit: -5 ~ -1 dBm
- Receive Sensitivity: -10 dBm
- Power Budget: 5dBm
- Over-load: -1 dBm
- Operating Temperature: -40°C to 85°C (-40°F to 185°F)

Fore more information of this Allied Telesis AT-SP10SR/I, please visit Allied Telesis website:

<https://www.alliedtelesis.com/us/en/products/transceivers/10G/sp10sri>

[Buy Now](#)