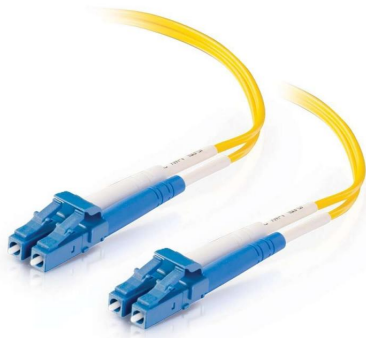


# OS2-LC-LC-D100M Datasheet



100m (328ft) 9/125 OS2 LC to LC Singlemode Duplex Fiber Optic Patch Cable

OS2-LC-LC-D100M

100m (328ft) 9/125 OS2 LC to LC Singlemode Duplex Fiber Optic Patch Cable

The 9/125 $\mu$ m OS2 single mode bend insensitive fiber optic cable is less attenuation when bent or twisted compared with traditional optical fiber cables and this will make the installation and maintenance of the fiber optic cables more efficient. It can also save more space for your high density cabling in data centers, enterprise networks, telecom room, server farms, cloud storage networks, and any places fiber patch cables are needed.

This fiber optic cable is ideal for connecting 1G/10G/25G/40G/100G/400G Ethernet connections. It can transport data for up to 10km at 1310nm, or up to 40km at 1550nm.

## Specifications

- Fiber Mode: OS2 9/125 $\mu$ m
- Connector 1: (1) Duplex LC Male
- Connector 2: (1) Duplex LC Male
- Cable Length: 100m (328ft)
- Fiber Count: Duplex
- Insertion Loss:  $\leq 0.3$ dB
- Return Loss:  $\geq 50$ dB
- Bend Radius: 50 mm
- Cable Diameter: 2.0mm

- Cable Jacket: PVC
- Operating Temperature: -20~70°C
- Storage Temperature: -40~80°C

[Buy Now](#)