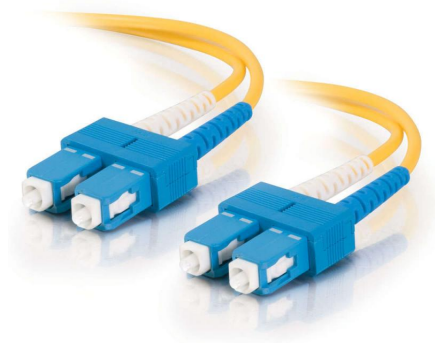


OS2-SC-SC-D20M Datasheet



20m (65.6ft) 9/125 OS2 SC to SC Singlemode Duplex Fiber Optic Patch Cable

OS2-SC-SC-D20M

20m (65.6ft) 9/125 OS2 SC to SC Singlemode Duplex Fiber Optic Patch Cable

The 9/125 μ m OS2 single mode bend insensitive fiber optic cable is less attenuation when bent or twisted compared with traditional optical fiber cables and this will make the installation and maintenance of the fiber optic cables more efficient. It can also save more space for your high density cabling in data centers, enterprise networks, telecom room, server farms, cloud storage networks, and any places fiber patch cables are needed.

This fiber optic cable is ideal for connecting 1G/10G/25G/40G/100G/400G Ethernet connections. It can transport data for up to 10km at 1310nm, or up to 40km at 1550nm.

Specifications

- Fiber Mode: OS2 9/125 μ m
- Connector 1: (1) Duplex SC Male
- Connector 2: (1) Duplex SC Male
- Cable Length: 20m (65.6ft)
- Fiber Count: Duplex
- Insertion Loss: ≤ 0.3 dB
- Return Loss: ≥ 50 dB
- Bend Radius: 50 mm
- Cable Diameter: 2.0mm
- Cable Jacket: PVC
- Operating Temperature: -20~70°C

- Storage Temperature: -40~80°C

[Buy Now](#)